



# MARTIN AUER CAFÉ AND BAKERY IN THE GEIDORFCENTER

Körösisstraße 64  
 8010 Graz  
 T +43 316 804030  
[www.martinauer.at](http://www.martinauer.at)

## ACCESSIBILITY

### Accessibility by public transport

Please use the route planner of the Styria Public Transport Network (Verbundlinie Steiermark):  
<https://verkehrsankunft.verbundlinie.at/>

### Parking

- Designated disabled parking spaces in the centre car parking areas (with barrier), 30 min. free parking, approx. 100 m from the café
- Shopping centre underground car park

## ENTRANCE

- Access to the café asphalted, level and suitable for wheelchairs
- Entrance door: Hinged door made of glass, clear door width 110 cm
- Handle: Bar handle
- Door stop: 1 cm
- At least 120 cm of space in front of and behind the entrance door

## INTERIOR AREA

- Flooring suitable for wheelchairs
- Counter: 86 cm high, above this display cabinet (easy to see) total height 129 cm, no under-counter wheelchair access
- Tables and chairs movable
- Lower edge of table 71 cm, under-table wheelchair access height 66 cm
- Table top 70 x 70 cm, sealed on the side with a panel
- Under-table wheelchair access, 62 cm space between the two side plates



Entrance



Interior area



Interior area

**OUTDOOR DINING AREA**

- In front of the entrance, surface suitable for wheelchairs
- Table and chairs movable
- Tables too low for wheelchair users



Outdoor dining area

**TOILET**

**Access to toilet**

Hinged door from glass with lever handle, clear door width 96 cm

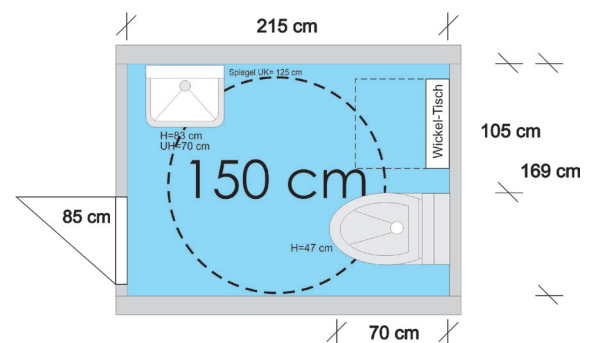
The toilets have no handrails and cannot therefore be described as accessible.

According to all other criteria, the ladies WC is relatively good for wheelchair users:

- Hinged door with lever handle
- Clear door width 85 cm
- Room dimensions: 215 x 169 cm
- Turning circle of 150 cm guaranteed
- WC height: 47 cm (standard 46–48 cm)
- WC accessible from the left, 105 cm space adjacent to WC
- Washbasin 83 cm, under-basin wheelchair access height 70 cm
- Lower edge of mirror at a height of 125 cm (too high for wheelchair users)
- No emergency bell available
- Fold-up baby changing table available



Toilet



**ADDITIONAL INFO**

- Baby changing facilities in the ladies WC
- Non-smoking facility

Validity: June 2015, errors and omissions excepted  
 Graz Tourism in cooperation with Hartberg Disability Support Group