

© Stoffbauer



STOFFBAUER

Oberer Plattenweg 21
 8043 Graz
 T +43 316 685300
www.stoffbauer.com

At the Stoffbauer, the focus has always been on good Styrian cuisine. Time-honoured recipes and great food of today complement each other to create a menu which caters to every taste. The legendary Stoffbauer fried chicken – crispy and golden brown – has made many guests happy and, above all, full. The exquisite selection of fine wines from South Styria and Styrian beer specialties rounds the offer off perfectly.

ACCESSIBILITY

Only by car, as there are no public transport stops located in the vicinity.

(The original stop directly in front of the house has closed.)

Parking

- Opposite the Stoffbauer inn, on the other side of the street
- Lightly gravelled, no marking

ACCESS AND ENTRANCE

- The accessible entrance is a **side entrance**, however, this is always open (a high step leads to the main entrance)
- 82 cm wide passage, a kerb by the side of the road directly in front of the passage provides a short incline
- A paved path leads to the entrance door
- Entrance: Hinged door with lever handle (is always open), **clear door width 70 cm**, the second leaf can be opened, the staff will be pleased to help
- **Threshold 6 cm**



Access



Entrance

INTERIOR AREA:

- Flooring suitable for wheelchairs (wood and tiles)
- Passage widths sufficient
- Tables, chairs and also benches movable
- Most tables with 4 legs, some with crossbars
- Under-table wheelchair access to 65 cm, upper edge 78 cm



Interior area

TOILET

Access:

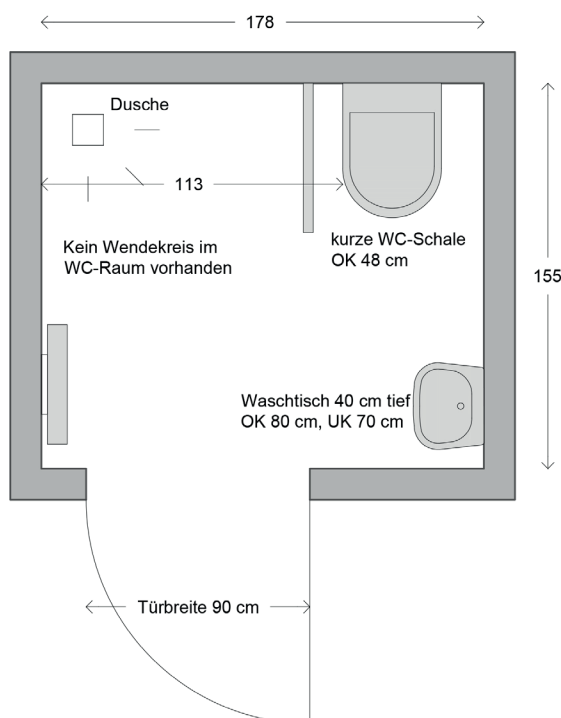
The toilets are located in the basement without a lift. They are accessible via the outdoor dining area. To do this, you have to take the exit outside the building to the outdoor dining area, this has a **slope** and is **heavily gravelled!**



Access WC and outdoor dining area

The accessible toilet is located separately next to the ladies and gents WCs.

- Hinged door with lever handle, easy to open
- Clear door width 90 cm



WC layout plan



Accessible WC

WC:

- Hinged door with lever handle, clear door width 90 cm
- Access areas slightly restricted by chairs in the vestibule
- **Turning circle of 150 cm not given**
- WC height: 48 cm; small WC bowl
- WC accessible from the right, on this side 113 cm space
- On the access side there is a small accessible shower
- 1 **short** folding support rail on the left at a height of 77 cm
- Paper can be reached from the WC when sitting
- Washbasin 45 cm wide, 40 cm deep, lower edge 70 cm, upper edge 80 cm
- Washbasin **only offers under-basin wheelchair access to 10 cm**, as no flush-mounted siphon
- Mirror is too high
- **No emergency bell available**
- No clothes hook



Accessible WC

OUTDOOR DINING AREA:

- **Access via heavily gravelled path with slope** (see toilet)!
- Most of the outdoor dining area is not usable for wheelchair users, as it is located on another level, which can only be accessed via **steps**.



Access level:

- Folding tables have no under-table wheelchair access, lower edge of table 67 cm; chairs and tables moveable
- Large tables with crossbars and benches movable, although heavy



Outdoor dining area

ADDITIONAL INFO

- Non-smoking facility
- Smoking permitted in the outdoor dining area
- Children's play area
- Toy box (for indoors)
- Baby changing possible in ladies WC
- Guide dogs allowed

Validity: October 2018, errors and omissions excepted