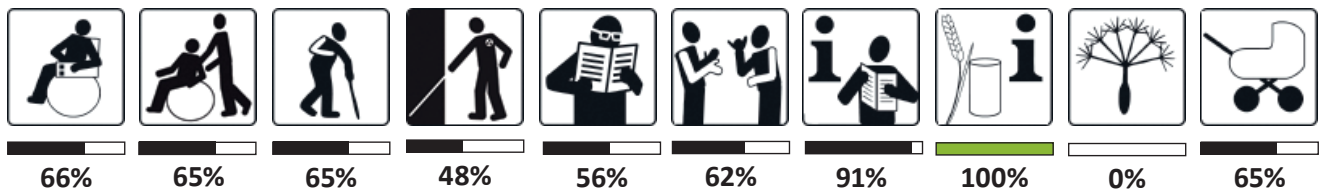




HOTEL KERN BUAM

Kärntner Straße 245
 8054 Graz
 T +43 316 291430
hotel@kernbuam.at
www.kernbuam.at



The family-run Hotel Kern Buam is located in the southern part of Graz. From there you can easily reach the city centre of Graz, which is 4 km away, and many excursion destinations in the Graz area.

The staff are very friendly, endeavouring and helpful.

Assistance dogs and families with children are very welcome.

The hotel has a cosy, barrier-free room on the ground floor. Please note that there is only 90 cm of space next to the bed.

There is a designated barrier-free car park near the entrance.

The four steps at the entrance are extremely difficult to negotiate with a very steep ramp (17.5 % gradient). It is therefore advisable to take the path around the house through the garden, from where you can easily reach the lobby and barrier-free room with the lift.

Access to the breakfast room from inside the building is not barrier-free. However, the purchase of a mobile ramp that bridges two steps has made access from the outside possible. Breakfast can also be enjoyed in the garden, which is accessible by lift.

ACCESSIBILITY

Accessibility by public transport

Please use the route planner of Verbundlinie Steiermark:
<https://verkehrsauskunft.verbundlinie.at>

INFORMATION FOR WHEELCHAIR USERS AND PEOPLE WITH REDUCED MOBILITY

Car park

- Free hotel car park directly in front of the hotel
- One designated disabled parking space (with a small sign), covered
- Car park at right angles, on a level surface, easy to roll over
- **less than 350 cm wide**

PATH TO THE ENTRANCE

- Path at least 150 cm wide and free of obstacles
- max. 100 m long, covered, illuminated throughout
- Longitudinal gradient max. 6%, transverse gradient max. 2%
- floor covering suitable for wheelchairs
- **4 steps to the entrance**, can be overcome by means of a **steep ramp** or via path around the house

Ramp

- Straight, **90 cm wide** (standard min. 120 cm), longer than 2 m
- **Longitudinal gradient 17.5 %!** (standard max. 6%); non-slip surface
- Movement area at the start and end of the ramp larger than 120 x 120 cm, but **smaller than 150 x 150 cm; ends not marked in contrasting colours**
- **No handrail and no wheel deflector available**

Steps

- 4 steps, straight, at least 120 cm wide
- **not all steps the same height, height up to 17 cm** (standard = max. 16 cm)
- Depth of steps 102 cm; **slab steps, protrude approx. 3 cm**
- **No handrail available**



Car park



Steep ramp to main entrance

ENTRANCE

Main entrance

- **is not barrier-free due to steps or ramp that is too steep**
- Free of obstacles, covered
- Doorbell at a height of 132 cm, door opener at 116 cm (standard 85 - 110 cm)
- Vestibule with hinged door and automated sliding door

Hinged door

- **difficult to open** (door closer), clear width 85 cm
- **Double-sided door threshold with 2 cm height**
- Door handle at standard height (vertical handle bar), panic bar inside
- At least 200 x 150 cm manoeuvring space in front of the door, **behind it only 130 cm long**
- At least 50 cm approach area on the opening and closing side of the door next to the door handle
- Door made of glass, door opening side labelled
- Dirt-trapping mat **not easy to use by wheelchairs**

Sliding door

- made of glass, automated, opens early and closes with a time delay
- Door clearance 130 cm, no threshold
- Movement area in front of door **only 130 cm long** (standard min. 150 cm diameter)

Barrier-free entrance

(path around the outside of the house)

- Path without steps, but **thresholds present** (max. 3 cm high)
- **Path not always 150 cm wide** (in the garden only 100 cm)
- turning space of 150 x 150 cm at the beginning and end of the path
- **Path not free of obstacles** (flower pots by the house), but passage width of 90 cm guaranteed
- Path easy to drive on with little vibration
- Longitudinal gradient max. 3%, transverse gradient max. 2%
- Path is longer than 100 m, **no seating available**
- **Path not covered and not illuminated throughout**



Barrier-free path outside around the house to lift

RECEPTION/LOBBY

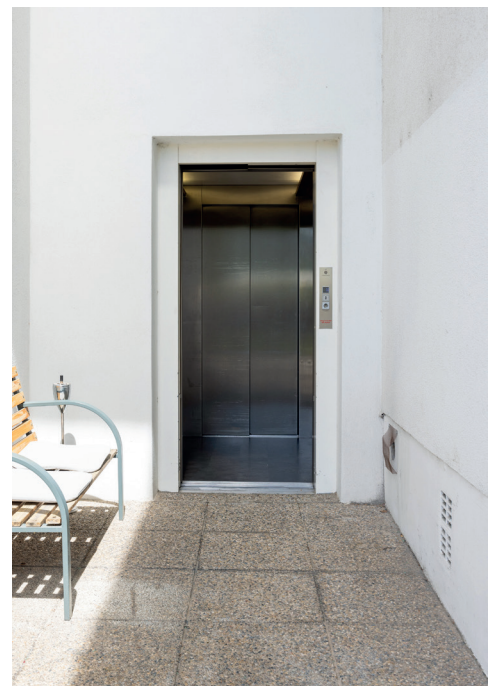
- Accessible via outside path and lift
- Visual and voice contact between person in wheelchair receptionist possible, but no lowered space with max. height of 85 cm
- Counter is wheelchair accessible
- 150 x 150 cm manoeuvring space in front of the counter
- credit card machines can be used at a height of 80-110 cm
- Seating available: with backrests and sturdy armrests, **seat 40 cm high** (standard 46-50 cm)
- High tables and low tables available
- Sufficient space for wheelchair users in the waiting area



Reception with main entrance

LIFT

- Stepless access via path around the outside of the building, but **not without thresholds** (max. 3 cm)
- Movement area for entering and exiting the lift at least 120 x 120 cm, but **not always 150 x 150 cm** (external access only 137 cm wide)
- Car at least 110 x 140 cm, **door clearance 80 cm** (standard 90 cm), no door threshold
- Light barriers at a maximum height of 100 cm
- No descending stairs opposite the landing door
- Handrail available (**at a height of 100 cm** instead of 90 cm)
- Push buttons and emergency call button at standard height
- Position indicator at standard height



Lift

ROOM 119

Access

- Stepless route (with lift), small threshold of 1 cm
- Path completely level, mostly 130 cm wide, passage widths of 90 cm guaranteed
- **Not always free of obstacles** (small table, but can be removed)
- Floor coverings are slip-resistant and firmly laid, carpets are suitable for wheelchairs
- Aisle door with 88 cm clearance, with horizontal pull handle on the closing side
- Small door threshold of 0.5 cm (on one side), space on both sides of the door complies with the standard
- Corridor door easy to open; at least 50 cm approach area on the opening side of the door next to the door handle, **only 13 cm on the closing side**

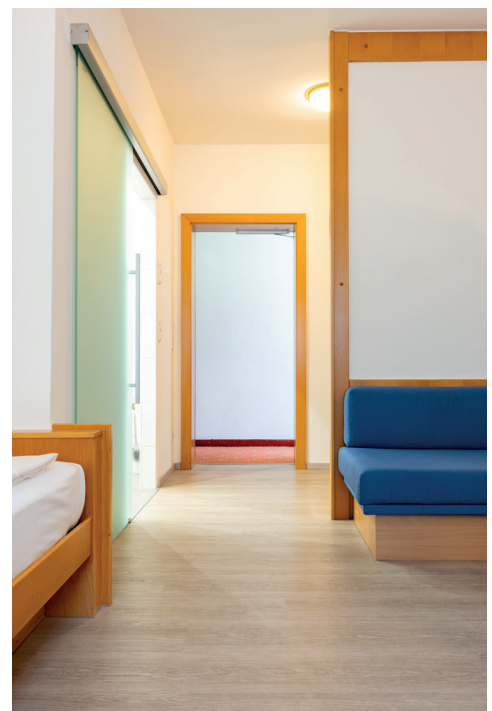
Room door

- Hinged door, 85 cm clearance
- Easy to open, no door closer
- **Door stop 2 cm** (no threshold on both sides)
- On the opening side of the door, **access area of at least 200 x 150 cm not given** (length only 137 cm), on the closing side 150 x 120 cm
- On the opening side of the door next to the door handle there is at least 50 cm approach area provided, **not on the closing side** (wall directly next to it)
- Door handle (no turning or shell handle) at a height of between 85 - 110 cm
- Horizontal pull handle on the closing side



Bedroom

- 2 single beds, **free space next to the bed only 90 cm** (ÖNorm min. 150 cm)
- Passage widths in the room approx. 100 cm when a box is moved
- **Bed cannot be lowered**, bed height 50 cm
- Movement space in front of the window **less than 120 x 120 cm** (only 80 cm at the desk)
- **Window handle at a height of 157 cm** (standard max. 110 cm)
- Light and telephone can be operated from the bed
- Light switch mostly at a height of 85 - 110 cm, coat hanger in wardrobe at standard height



Accessible room No. 119

BATHROOM ROOM 119

Movement space of 150 x 150 cm

Door

- sliding door, easy to open, not self-closing;
- 88 cm clear width, small one-sided threshold of 0.5 cm
- Door handles (no turning or shell handles) at a height of between 85 - 110 cm
- Can be unlocked from the outside in an emergency



Bathroom

Shower

- Shower area wheelchair accessible, no threshold;
- **Movement area in the shower 81 x 175 cm** (standard min. 130 x 180 cm)
- Sliding shower cubicle partition
- Horizontal grab rail at standard height (75-85 cm), **only on one side of the wall**, at least 90 cm long
- Vertical grab rail positioned 71 cm from the corner, extends to a height of at least 150 cm
- Grab rails can be safely gripped
- Fixed folding shower seat with 1 fixed handle on one side
- Seat height 46 - 48 cm, seat surface at least 40 x 40 cm
- Height-adjustable hose shower, flexibly adjustable **from a height of 83 cm** (standard from 75 cm)
- Shower fitting at a height of 80 - 110 cm, designed as a single lever, accessible from the side from a sitting position
- Soap dispenser at standard height (80 - 110 cm)
- **No emergency bell in the shower area**



WC

- Accessible from the left, 102 cm space on this side
- at least 120 cm space in front of the toilet bowl
- Short toilet bowl (distance from front edge of toilet to rear wall 50 cm instead of standard 65 cm)
- WC at standard height (46 - 48 cm), **no back support available**
- Horizontal grab rails on both sides at a height of 75 - 85 cm, folding grab rail on the approach side
- **Clearance between the grab rails 76 cm** (standard 65 - 70 cm), **do not protrude at least 15 cm beyond the front edge of the WC**
- Additional vertical grab rail
- Grab rails are securely fastened and easy to operate
- Toilet paper and flush (at standard height) can be reached from the toilet while seated
- Emergency bell can be reached from the WC while seated (flashes and beeps outside the room)



Bathroom

Waschbecken

- at standard height (80-85 cm), free height below at least 70 cm; standard depth
- Accessible width of at least 100 cm
- manoeuvring space in front of washbasin 150 x 150 cm
- Centre line of the washbasin to the adjacent wall surface **only 42 cm** (standard min. 50 cm)
- Flat plaster siphon, made of plastic or protected with porcelain
- Single lever tap
- **Mirror is mounted too high** (lower edge at 122 cm instead of max. 95 cm)
- **Not all operating levels of fittings at a height of between 85 - 110 cm** (hairdryer and socket at 150 cm), light switch at standard height
- Waste bin can be operated with one hand

BREAKFAST ROOM

- **Access from inside the building not barrier-free! (6 steps)**
- barrier-free access to breakfast room from outside via mobile ramp over 2 steps
- breakfast also possible in the lobby, in the room or in the guest garden
- tables in the lobby with wheelchair accessible height, but table centre stand interferes with wheelchair access
- Door to breakfast room easy to open, does not swing through, no door closer
- Seating in the breakfast room **44 cm high** (standard 46 - 50 cm), **without armrests**
- Buffet with service; some of the food on offer is **higher than 120 cm**



mobile outdoor ramp to breakfast room

Steps

- Straight, at least 120 cm wide, at least 30 cm deep
- **Not all steps the same height, height up to 19.5 cm** (standard max. 16 cm)
- Handrail **only on one side**, at standard height, safe to grasp
- **Handrail does not continue horizontally for at least 30 cm at both ends of the steps**



breakfast room

Access to guest garden

Barrier-free access with the lift
 (exit directly in the garden)

Without using the lift:

Door

- Sliding glass door, not automated
- **Difficult to open, threshold on both sides**
 (max. 2 cm high)
- At least 90 cm clear passage width, free of obstacles
- Door handle at standard height
- **Door mat not flush-mounted**



Access from lobby to guest garden

3 Steps

- Straight, at least 120 cm wide, at least 30 cm deep
- **Not all steps the same height, higher than standard** (= max. 16 cm)
- **Slab steps protrude 4 cm**
- **No handrail present**

INFORMATION FOR BLIND AND VISUALLY IMPAIRED PEOPLE

CAR PARK

- Free hotel car park directly in front of the hotel
- one designated disabled parking space near the entrance, covered
- Car park at right angles to the road

PATH TO THE ENTRANCE

- **No tactile guidance system available**
- Path at least 150 cm wide and free of obstacles
- max. 100 m long, covered, continuously illuminated
- Walkway boundaries are easily recognisable with a white cane
- 4 steps to the entrance, can be overcome by means of a **steep ramp**

Ramp

- Non-slip surface; **no handrail available**
- **Ends not marked in contrasting colours, no contrasting surface change**

Steps

- 4 steps, straight, at least 120 cm wide
- **Not all steps the same height, height up to 17 cm** (standard = max. 16 cm)
- Depth of steps 102 cm; **slab steps, protrude approx. 3 cm**
- **No handrail available**
- **Entrance and exit steps not designed in contrasting colours**

ENTRANCE

Main entrance

- free of obstacles, covered
- Vestibule with hinged door and automated sliding door

Hinged door

- **difficult to open (door closer)**
- Door made of glass, marked with sufficient contrast, door opening side labelled
- Door handle stands out in contrast to other components

Sliding door

- made of glass, automated, opens prematurely and closes with a time delay
- **Not clearly perceptible**, not marked with sufficient contrast

Barrier-free entrance (path around the outside of the building)

- **No tactile floor guidance system**
- **Path not free of obstacles** (flower pots by the house), but passage width of 90 cm guaranteed
- Walkway boundaries easily recognisable with a white cane
- **Path not covered and not illuminated throughout**

RECEPTION/RECEPTION AREA

- There is **no tactile floor guidance system** leading to reception.
- Reception stands out visually in contrast to the surroundings
- Glare-free and illuminated according to the area of use
- Staff help with registration
- **Information not easy to read, it reflects**

ORIENTATION

- **Information not based on the 2-senses principle** (visual/tactile, visual/audible)
- **Room labelling, floor markings not tactile**
- **No tactile floor guidance system**
- Signage well illuminated, font size mostly adapted to reading distance
- **Hazardous areas not always marked with high contrast**
- **No information in Braille**

LIFT

- Light barriers at a maximum height of 100 cm
- **No tactile floor labelling**
- Push buttons at stops near the lift door
- Inside and outside tactile push buttons with raised lettering (inside in Braille)
- Display easy to read inside, **very small outside**
- Pressing the buttons **is not audibly confirmed**
- **No audible announcement in the lift, no audible signal when the lift arrives**
- Push button for building exit highlighted
- Handrail available (at a height of 100 cm instead of 90 cm)

ROOM 119

Access

- **No tactile floor guidance system**
- Path to room **not always free of obstacles** (small table, but can be removed)
- Floor coverings stand out visually in contrast to the surroundings and are non-slip
- Corridor to the room **somewhat dark**
- Corridor door clearly perceptible, easy to open; no door closer
- Door handle **does not stand out in contrast to neighbouring components**

Room door

- hinged door, easy to open, no door closer
- Clearly perceptible, door handle also stands out in contrast to neighbouring components

Bathroom

- Sliding door, easy to open, not self-closing;
- In the shower, the lever of the fitting points downwards to prevent injuries when leaning forward
- Emergency call system by the toilet **is not visually contrasting, not tactilely detectable or clearly labelled**; flashes and beeps outside the room
- Furnishings stand out visually in contrast to their surroundings

BREAKFAST ROOM

- Tables with noise reduction in the lobby rather than in the breakfast room
- Door to the breakfast room **not clearly perceptible**
- Easy to open, does not swing through, no door closer
- **Glass door not marked with sufficient contrast**

Steps

- 6 steps, straight, at least 120 cm wide, at least 30 cm deep
- **Not all steps the same height, height up to 19.5 cm** (standard max. 16 cm)
- **Handrail only on one side**, at standard height, safe to grasp
- **Handrail does not continue horizontally for at least 30 cm at both ends of the steps**
- Entrance and exit steps designed in contrasting colours

ACCESS TO GUEST GARDEN

- Barrier-free access with the lift
- Guest garden separated from the walking area

Door

- Sliding glass door, not automated; free of obstacles
- **Not marked with sufficient contrast, door handle difficult to see**
- **Difficult to open, door threshold on both sides** (max. 2 cm high)
- **Door mat not flush-mounted**

3 steps

- Straight, at least 120 cm wide, at least 30 cm deep
- **Not all steps the same height, higher than standard** (= max. 16 cm)
- **Slab steps, protrude 4 cm**
- **Entrance and exit steps not designed in contrasting colours at the front edge**
- **No handrail available**

INFORMATION FOR HEARING IMPAIRED AND DEAF PEOPLE

- Path to main entrance illuminated throughout
- Path around the outside of the building **not illuminated throughout**
- **No inductive hearing system at reception** (but paper and pen available)
- **Information not based on the 2-senses principle** (visual/tactile, visual/acoustic)
- Lift: Pressing the push buttons inside and outside is visibly confirmed; pressing the emergency call is also visibly confirmed
- Tables with glare-free lighting in the breakfast room
- Visual alarm system available (flashing light in front of the room)
- Teletext available
- **No deaf case available**
- Orientation or escape plan in the room

INFORMATION FOR ALLERGY SUFFERERS

- Breakfast room free of dust-prone carpets, upholstered furniture, curtains
- **Dust-prone carpets in the corridors**
- No dust-prone carpets and curtains in the room, but **upholstered furniture**
- Also offers for people with food allergies
- Staff are aware of the ingredients in the food and are trained by nutritionists

As at: September 2023, updates in July 2024 | All information without guarantee

Quelle: http://www.bereit-fuer-barrierefreiheit.eu/de/Betriebe/?xt=CEDOSCheckResults&xtMethod=showDataset&cat_id=1574&tobj_id=3154