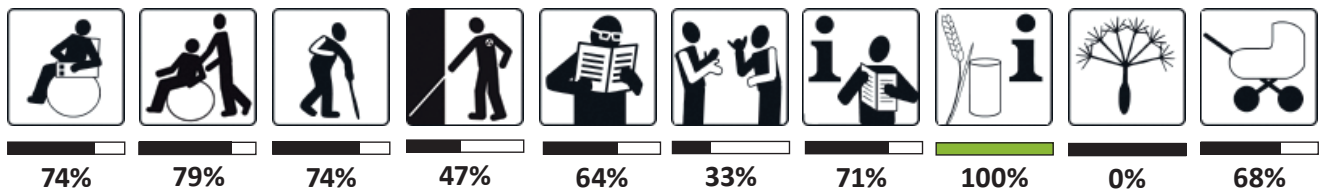


© Ibis Styles Graz Messe



IBIS STYLES GRAZ MESSE

Waltendorfer Gürtel 8
 8010 Graz
 T +43 316 826300
 HB9U3@accor.com
<https://all.accor.com/hotel/B9U3/index.de.shtml>



The ibis Styles Graz Messe is located between the fair grounds and the city centre. The hotel offers meeting rooms that can be customised as required, free WiFi and a 24-hour reception. There are several public transport stops just around the corner. The design hotel also offers a chargeable underground car park with a barrier-free parking space.

The hotel has two almost identical accessible rooms on the first floor, in which the beds can be moved flexibly if the access area is too small. A small threshold leads into the bathroom, but you can really feel at ease inside – a level-access shower, a flexible shower seat and grab rails in the toilet and shower area round off the facilities.

The breakfast area is open and friendly. Even if the buffet is a little high up, there are staff who are happy to help if required. Special attention is paid to the needs of people with food allergies and vegans - please let us know when you book.

ACCESSIBILITY

Accessibility by public transport

Please use the route planner of Verbundlinie Steiermark:
<https://verkehrsankunft.verbundlinie.at/>

INFORMATION FOR WHEELCHAIR USERS AND PEOPLE WITH REDUCED MOBILITY

Car park

- Hotel's own car park, subject to a charge
- One designated disabled parking space near the barrier-free entrance
- Marked with a sign
- Car park at right angles to the roadway, on a level surface, easy to roll over
- Parking space at least 350 cm wide, boundary marked in colour on the ground
- Entrance gate/barrier does not open automatically, a bell must be rung at a **pillar (this cannot be operated from a wheelchair or car)**
- Path from the car park to the lift: 2 doors with a width of 100 cm, **door threshold 3 cm high**, doors with **locking device**



Car park

PATHS OUTSIDE AND ENTRANCE

- Path at least 150 cm wide, without thresholds, free of obstacles
- Easy to roll on, non-slip surface
- **Longitudinal gradient 9.3%** (standard max. 6%), transverse gradient max. 2%
- Path max. 100 m long, **not covered**
- The barrier-free entrance is the main entrance
- Clear width min. 90 cm, no threshold
- Automated sliding door made of glass, opens early and closes with a time delay
- **Door opening side not labelled**
- Access area of at least 150 x 120 cm on both sides of the door
- Entrance free of obstacles, **not covered**



Entrance

RECEPTION/RECEPTION AREA

- Accessible without thresholds
- Visual and voice contact between person in wheelchair and contact person possible, but **no lowered space that is max. 85 cm high**
- **no under-desk wheelchair access**
- 150 x 150 cm manoeuvring space in front of the counter
- Passage widths of at least 90 cm
- credit card machines can be used at a height of 80-110 cm
- Seating available: Seat 46-50 cm high, **no stable armrests and backrests**
- Sufficient space for wheelchair users in the waiting area
- Counter manned at all times



Reception & lobby

INDOOR AREA

- Paths without thresholds, at least 120 cm wide
- When the path changes direction, **there is not always a manoeuvring space of 150 cm** (corridor in which the barrier-free rooms are located is only 144 cm wide)
- Floor coverings are non-slip and firmly laid, carpets are easy to roll over
- **No orientation or escape plan available**
- Consistent signage, high-contrast design, well-lit

LIFT

- Accessible without thresholds
- Movement area for entering and exiting at least 150 x 150 cm
- **Lift car 100 x 138 cm** (= limited accessibility; ÖNorm min. 110 x 140 cm)
- Door clearance min. 90 cm, no door threshold
- Light barriers at max. 100 cm height
- No descending stairs opposite the landing door
- Push buttons at the stops near the lift door
- Push buttons and emergency call buttons at standard height
- Position indicator at standard height
- Handrail available (at standard height)
- **No mirror opposite the lift door**



Lift and staircase

STEPS

- Steps straight, min. 120 cm wide, **29 cm deep** (standard min. 30 cm)
- **17 cm high** (standard max. 16 cm), **not all steps the same height**
- No protruding slab steps
- **No landing after max. 20 steps**
- Front edge of entry and exit steps **not designed in contrasting colours**
- Handrails on both sides, safe to grasp, **at a height of 1 m** (standard 85 - 90 cm)
- **Handrails not continuous**
- **do not continue horizontally for at least 30 cm at both ends of the steps**

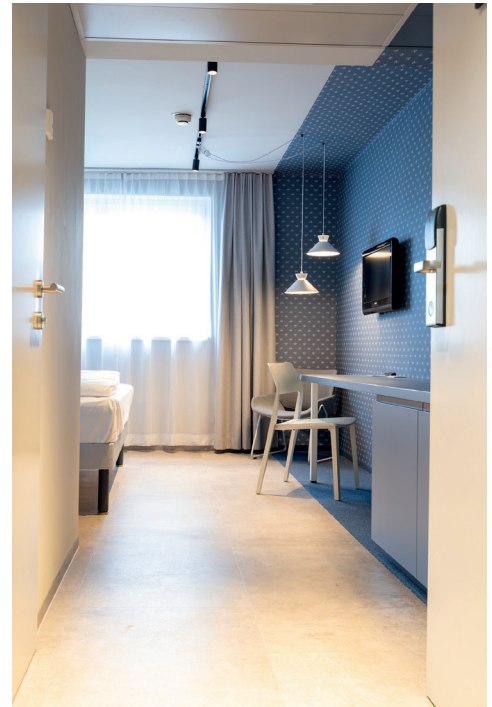
ROOMS 128 AND 130

Room door

- Hinged door, 85 cm clearance
- Easy to open, no door closer
- **Door stop 2 cm** (threshold just on one side)
- On the opening side of the door, access area of at least 200 x 150 cm **not given**, on the closing side 150 x 120 cm
- On the opening side of the door next to the door handle, **only 18 cm lateral approach area** provided, on the closing side at least 50 cm
- Door handle (no turning or shell handle) at a height of between 85 - 110 cm

Bedroom

- 2 single beds, **free space next to the beds only 60 cm**; by moving the beds, however, at least 120 cm can be created next to one of the beds (according to ÖNorm, however, 150 cm would be required)
- Passage widths in the room at least 100 cm, but less than 120 cm
- **no under-bed wheelchair access, bed height 61 cm** (standard 45 - 50 cm)
- Movement space in front of the window **less than 120 x 120 cm**
- Window **handle higher than standard** (max. 110 cm)
- Light can be switched on from the bed
- Light switch at a height of 85 - 110 cm
- Coat hooks at a **height of 146 - 160 cm** (standard 85 - 120 cm)
- Carpet can be rolled over easily, no tripping hazard



Barrier-free room no. 128

Bathroom rooms 128 and 130

Movement area of 150 x 150 cm provided

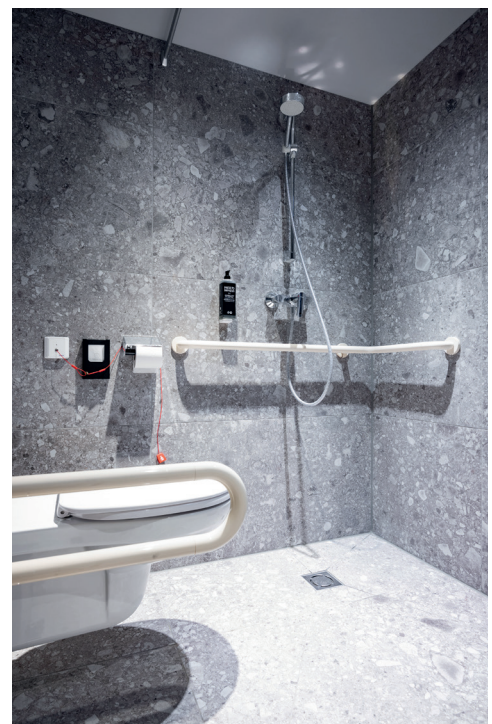
Door

- hinged door, easy to open, not self-closing;
- 85 cm clear width, one-sided threshold of 2 cm
- Door handles (no turning or shell handles) at a height of between 85 - 110 cm
- Door opens outwards and can be unlocked from the outside in an emergency
- On the opening side of the door, **there is no access area of at least 200 x 150 cm**, on the closing side 150 x 120 cm
- At least 50 cm side access area next to the door handle on the opening and closing side of the door



Shower

- Shower area wheelchair-accessible, no threshold; non-slip floor
- **Movement area in the shower 100 x 95 cm** (standard min. 130 x 180 cm)
- Shower area partition available (curtain)
- Horizontal grab rail **at a height of 94 cm** (standard 75-85 cm), at least 50 cm long on the first side of the wall, at least 90 cm long on the second wall
- Grab rails safe to grasp
- Mobile, stable shower seat, seat height 46 - 48 cm, seat surface 30 x 50 cm (standard min. 40 x 40 cm)
- Height-adjustable hose shower, flexibly adjustable from 75 to at least 150 cm
- Shower mixer at a height of 80 - 110 cm, designed as a single lever, accessible from the side from a sitting position
- Soap dispenser **at a height of 124 cm** (standard 80 - 110 cm)
- **No emergency bell in the shower area**



Bathroom room no. 128

WC

- Accessible from the left, at least 90 cm space on this side
- **94 cm space in front of the toilet bowl** (standard min. 120 cm)
- Long toilet bowl (distance between the front edge of the toilet and the rear wall at least 65 cm)
- **WC 50 cm high** (standard 46 - 48 cm), no back support available

- **Only one horizontal grab rail**, foldable, **at a height of 64 cm** (standard 75 - 85 cm)
- **Grab rail does not protrude at least 15 cm beyond the front edge of the WC**
- Grab rail securely fastened and easy to operate
- WC paper can be reached from the WC while seated
- Flush (at standard height) cannot be reached from the WC while seated
- Emergency bell within seated reach from the WC (leads to reception)
- Emergency call **not accessible from the floor at a height of max. 35 cm**

Washbasin

- Movement area in front of washbasin at least 150 x 150 cm
- Top edge **at a height of 91 cm** (standard 80-85 cm), free height under washbasin at least 70 cm;
- Standard depth, wheelchair accessible width of at least 100 cm
- Centre line of the washbasin to the adjacent wall surface at least 50 cm
- **No flat plaster siphon**, siphon in room 128 made of plastic or protected with porcelain, **not in room 130**
- Single lever tap
- **Mirror is mounted too high** (lower edge at 128 cm height instead of max. 95 cm), but adjustable
- Operating lever for adjusting the mirror available, **at a height of 122 cm** (standard 80 - 110 cm)
- **Not all operating levels of fittings at a height between 85 - 110 cm**
- Waste bin **cannot be operated with one hand**

BREAKFAST ROOM

- Accessible without thresholds
- Breakfast buffet (no service, but someone is always present)
- **No lowered space at the counter** with a mx. height of 85 cm, **not wheelchair accessible**
- at least 150 x 150 cm space in front of buffet; passage widths at least 100 cm
- Tables with wheelchair access (min. 80 cm wide, 70 cm high, 60 cm deep); top edge 73 cm high
- Seating options with sturdy backrests, standard seat height
- Food available at a height of 96 cm
- **Food not within reach of 40 - 70 cm**
- Children's chairs available



Breakfast room

GENERAL BARRIER-FREE WC (on the ground floor)

- Accessible without thresholds;
- Separately arranged (unisex), **not labelled**
- Movement area of 150 x 150 cm guaranteed

Door

- hinged door, easy to open, **self-closing**;
- Clear width at least 80 cm, no threshold
- Door opens outwards and can be opened from the outside in an emergency
- Door handles (no turning or shell handles) at a height of between 85 - 110 cm
- Access area of at least 200 x 150 cm on the opening side of the door, at least 150 x 120 cm on the closing side
- At least 50 cm side approach area next to the door handle on the opening and closing side
- **No horizontal closing handle on the closing side**



General barrier-free WC

WC

- Accessible from the right, at least 90 cm space on this side for approach
- **less than 120 cm space in front of the toilet bowl** for approaching, as the washbasin is in the way
- Long toilet bowl (distance from the front edge of the toilet to the rear wall at least 65 cm)
- WC at standard height (46 - 48 cm), **no back support available**
- Horizontal grab rails on both sides, foldable on the approach side, **distance 75 cm** (standard 65 - 70 cm)
- Grab rails at standard height (upper edge at 75 - 85 cm)
- Additional vertical grab rail
- Grab rails **do not protrude at least 15 cm beyond the front edge of the WC**
- Grab rails protrude a maximum of 20 cm into the room when folded up; securely fastened and easy to operate
- Toilet paper can be reached from the WC while seated
- Flush (at standard height) cannot be reached from the WC while seated
- Emergency bell accessible from the WC while seated (leads to reception)
- Emergency call **not accessible from the floor at a height of max. 35 cm**

Washbasin

- Movement area in front of washbasin at least 150 x 150 cm
- Top edge at a height of 80-85 cm, **free height under washbasin 65 cm** (standard min. 70 cm)
- Standard depth, wheelchair accessible width of at least 100 cm
- Centre line of the washbasin to the adjacent wall surface min. 50 cm
- Distance from the tap to the front edge of the washbasin 20 - 35 cm
- Flat plaster siphon, made of plastic or protected with porcelain
- Single lever tap
- Mirror is mounted too high, but can be adjusted
- **Not all operating levels of fittings at a height of between 85 - 110 cm** (116 or 140 cm in some cases)
- Waste bin can be operated with one hand

SEMINAR ROOMS

- Accessible without thresholds
- Clear door width at least 80 cm; passage widths at least 90 cm
- Furniture can be moved, tables can be driven under
- Seating at a height of 46-50 cm, with sturdy backrests and armrests
- All controls at a height of 80 - 110 cm
- Desk height max. 85 cm



Seminar room

INFORMATION FOR BLIND AND VISUALLY IMPAIRED PEOPLE

CAR PARK

- Hotel's own car park, subject to a charge
- One designated disabled parking space near the barrier-free entrance
- Car park at right angles to the roadway
- A lift leads from the underground car park to reception

PATHS OUTSIDE AND ENTRANCE

- **No tactile floor guidance system available**
- Path at least 150 cm wide, max. 100 m long
- Free of obstacles, **not covered**
- Walkway boundaries are not easily recognisable with a white cane
- The barrier-free entrance is the main entrance
- Automated sliding glass door, opens early and closes with a time delay
- **Markings too high** (130 - 160 cm high instead of 90 - 150 cm)
- **Door opening side not labelled**
- Entrance free of obstacles, **not covered**

RECEPTION/RECEPTION AREA

- **There is no tactile floor guidance system leading to reception.**
- Reception stands out visually in contrast to the surroundings
- Glare-free and illuminated according to the area of use
- Staff help with registration

INTERIOR AND ORIENTATION

- Floor coverings/carpets slip-resistant and firmly laid, **do not stand out visually in contrast to building components**
- Lighting is sufficient and appropriate for the area of use
- Consistent signage, high-contrast design, well lit
- **No orientation or escape plan available**
- **No information based on the 2-senses principle** (visual/tactile, visual/acoustic)
- Room labelling and floor designations **not tactile**
- Signage high-contrast and well-lit

LIFT

- Light barriers at a maximum height of 100 cm
- **No tactile floor labelling**
- Push buttons at stops near the lift door
- Push buttons inside and outside **not with raised lettering, not in Braille**
- Push button for building exit **not emphasised**
- Labelling of operating buttons **not large enough**
- Display inside and outside easy to read
- Pressing the push buttons **is not audibly confirmed**
- **No audible announcement in the lift**, audible signal when the lift arrives
- Handrail available (at standard height)

STEPS

- Steps straight, min. 120 cm wide, **29 cm deep** (standard min. 30 cm)
- **17 cm high** (standard max. 16 cm), **not all steps the same height**
- No protruding slab steps
- **No landing after max. 20 steps**
- Entrance and exit steps **not designed in contrasting colours at the front edge**
- Handrails on both sides, safe to grasp, **at a height of 1 m** (standard 85 - 90 cm)
- Handrails not continuous
- **do not continue horizontally for at least 30 cm at both ends of the steps**

ROOMS 128 AND 130

- **No tactile floor guidance system**
- **Room door not clearly perceptible;** free of obstacles
- Easy to open; no door closer
- Door handle stands out in contrast to neighbouring components
- Bathroom door easy to open, not self-closing
- In the shower, the lever of the fitting points downwards to prevent injuries when leaning forwards
- Emergency call system by the WC has a visually contrasting design; emergency call leads to reception
- Furnishings stand out visually in contrast to their surroundings
- **No audible alarm system in the bathroom,** but audible alarm system in the hotel

BREAKFAST ROOM

- Tables with noise reduction available
- Buffet without service, but there is always staff on hand to help

GENERAL BARRIER-FREE WC (ON THE GROUND FLOOR)

- **Not signposted**
- WC door opens outwards and can be unlocked from the outside in an emergency
- Door handle contrasts with neighbouring components
- Emergency bell can be reached from the WC from a seated position, visually contrasting design (emergency call leads to reception)
- **Furnishings do not stand out visually in contrast to their surroundings**

SEMINAR ROOMS

- **No tactile floor guidance lines**
- Attention was paid to the acoustic design of the room
- the room is glare-free and evenly lit

INFORMATION FOR HEARING-IMPAIRED AND DEAF PEOPLE

- **No induction loop system at reception** (but paper and pen available)
- **Information not based on the 2-senses principle** (visual/tactile, visual/acoustic)
- Lift: pressing the buttons inside and outside is visibly confirmed; pressing the emergency call is also visibly confirmed
- Tables with glare-free lighting in the breakfast room
- **No deaf case available**
- **No induction loop system** in the seminar room; room is evenly lit without glare
- **No visual alarm system throughout the building**

INFORMATION FOR ALLERGY SUFFERERS

- There are no dust-prone carpets in the corridors
- **Carpets and curtains in the rooms and breakfast room**
- Offers for food allergy sufferers: gluten-free muesli and pastries, lactose-free yoghurt and cheese, vegan options
- Staff are aware of the ingredients in the food

Status: February 2024, All information without guarantee

Source: http://www.bereit-fuer-barrierefreiheit.eu/de/Betriebe/?xt=CEDOScheckResults&xtMethod=showDataset&cat_id=1591&tobj_id=3164