



## CONGRESS GRAZ

Messe Congress Graz Betriebsgesellschaft m.b.H.  
 Albrechtgasse 1  
 8020 Graz  
 T +43 316 8088 0  
[office@mcg.at](mailto:office@mcg.at)  
[www.mcg.at](http://www.mcg.at)

### ACCESSIBILITY

#### Accessibility by public transport

- All tram lines to “Hauptplatz”, from there approx. 200 m

#### Parking

- Designated disabled parking space in the Landhausgasse (approx. 10 m from the entrance), parallel parking, without slope
- Additional disabled parking spaces in the Raubergasse (13 m) and Schmiedgasse (20 m), short-stay parking zone nearby
- Nearest underground car park Andreas-Hofer Platz, approx. 150 m away

### ENTRANCE AREA

- Entrance area completely level
- 3 double swing doors made of glass with handle
- During smaller events, the middle doors are open, during larger events and concerts all three are open
- Clear door width 2 x 88 cm each, no door stop
- Vestibule, followed by three hinged doors made of glass with the same dimensions
- Carpet suitable for wheelchairs
- Box office on left: Counter height 104 cm, no under-counter wheelchair access
- Small cloakroom for people with walking difficulties is also located there



Entrance detail



Evening box office



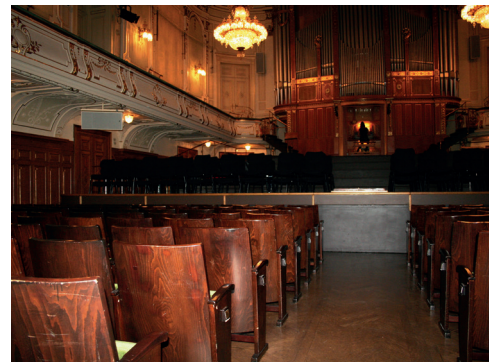
Lift exit to the event space

**LIFT**

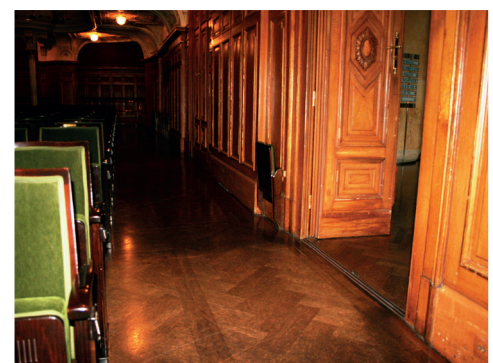
- Left after the entrance, at the box office/cloakroom
- Leads one floor higher to the concert halls (Stephanie Hall, Chamber Music Hall) and seminar rooms (but not to places in the gallery)
- Clear door width 87 cm, depth 140 cm, width 110 cm
- Turning circle on entry and exit 150 cm
- Controls at a height of 110–120 cm, with Braille lettering
- Lift usable without key
- Emergency bell available
- Visual indication on the display
- No audible announcement



Foyer and bar



Stephanie Hall



Wheelchair spaces

**INTERIOR AREA**

- Parquet floor in the concert halls suitable for wheelchairs
- Some carpet in the corridors and seminar rooms, relatively suitable for wheelchairs
- Doors are all double-leaf hinged doors with lever handles which are fully open at events (clear door width 130 cm), no door stop
- There are 3–4 wheelchair spaces in the Stephanie Hall (behind each other) in the aisle immediately after the entrance to the Stephanie Hall, on the left-hand side of the auditorium
- If necessary (and after advance notification), space can be created for several wheelchair users by removing individual seats
- No induction loop system available in the building

**ACCESSIBLE TOILET**

- Individual accessible WC in the general toilet facilities
- For men and women
- With Eurokey, is not locked, however
- Access to all toilets: Clear door width 96 cm, 1 cm door stop with small ramp
- Corridor to toilets 132 cm wide
- Door: Hinged doors with lever handle, clear door width 90 cm
- Turning circle of 150 cm available
- WC height 52 cm (standard 46–48 cm)
- Handrails on both sides, each fold upwards, height 86 cm
- Accessible from the right, free space at least 150 cm (free space on the left only 70 cm)
- Washbasin 77 cm upper edge, 64 cm lower edge
- Mirror tilted
- Emergency bell available



Crossover to WC



WC



WC

**ADDITIONAL INFORMATION**

- Guide dogs allowed
- Audible alarm system available (public announcement)
- No separate baby changing facilities, although they can be provided if required

Validity: October 2012, errors and omissions excepted

